

0961180-070600

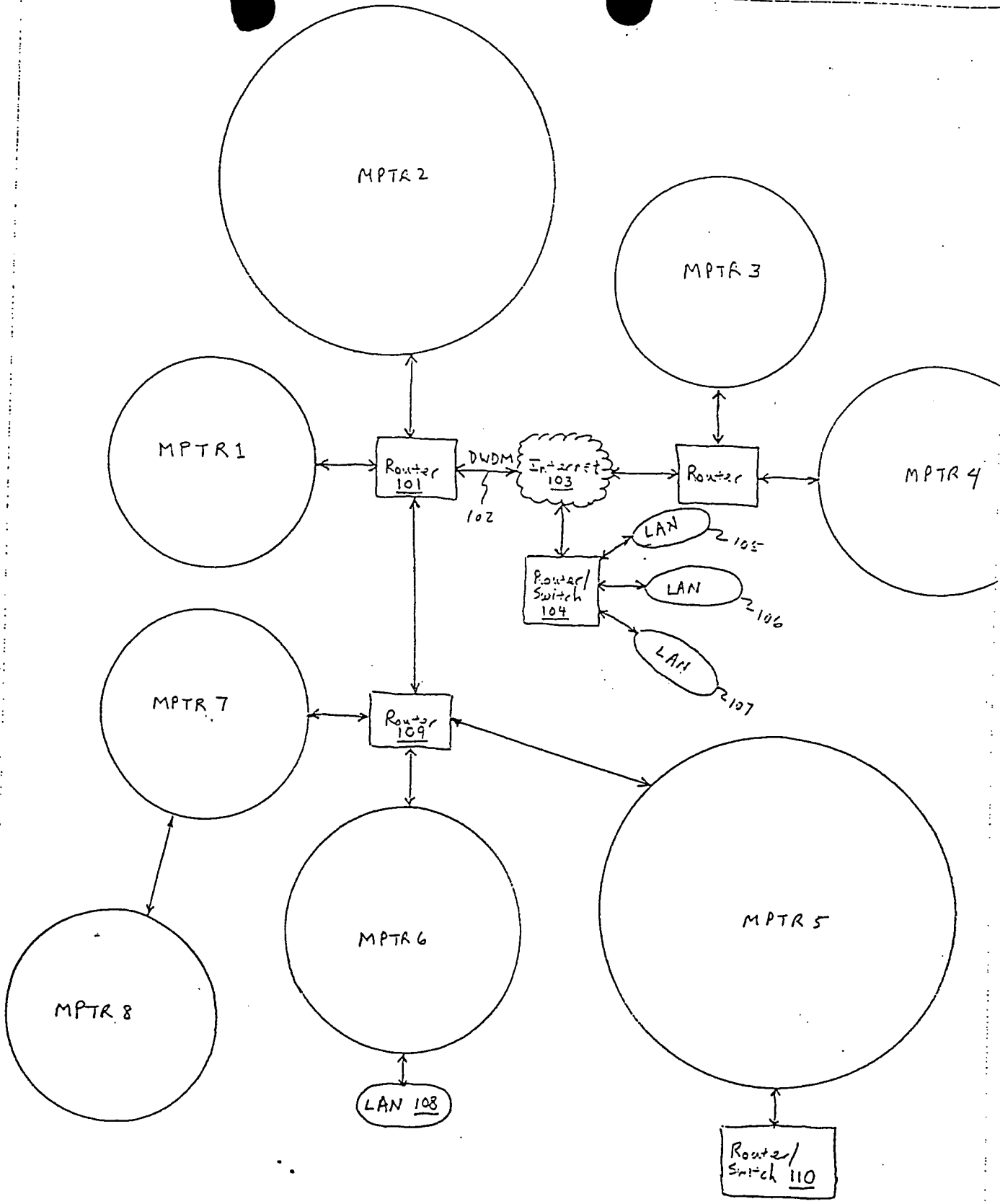


FIG. 1

009020" DETT 1960

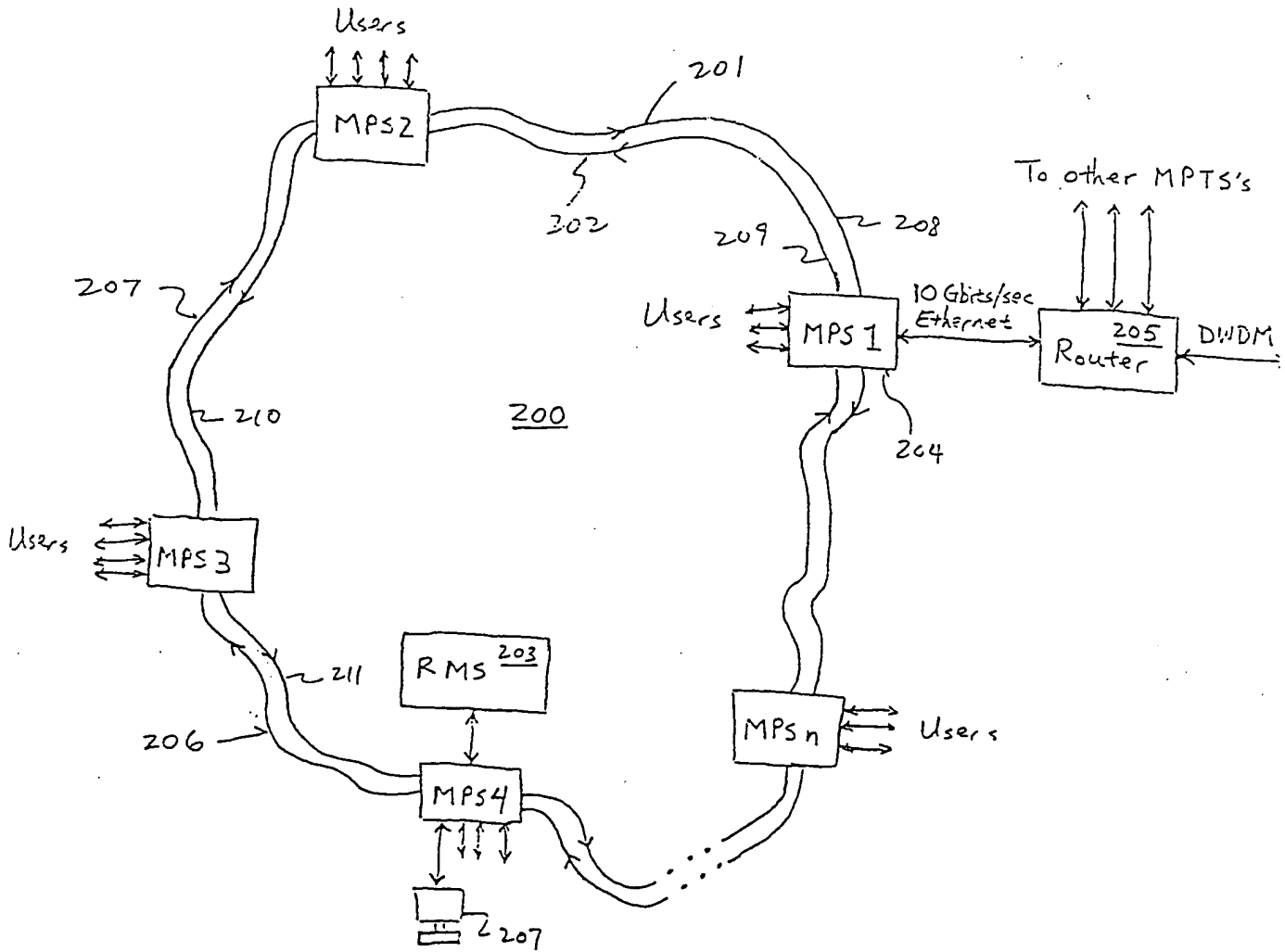


FIG.2

300

009070-08T1960

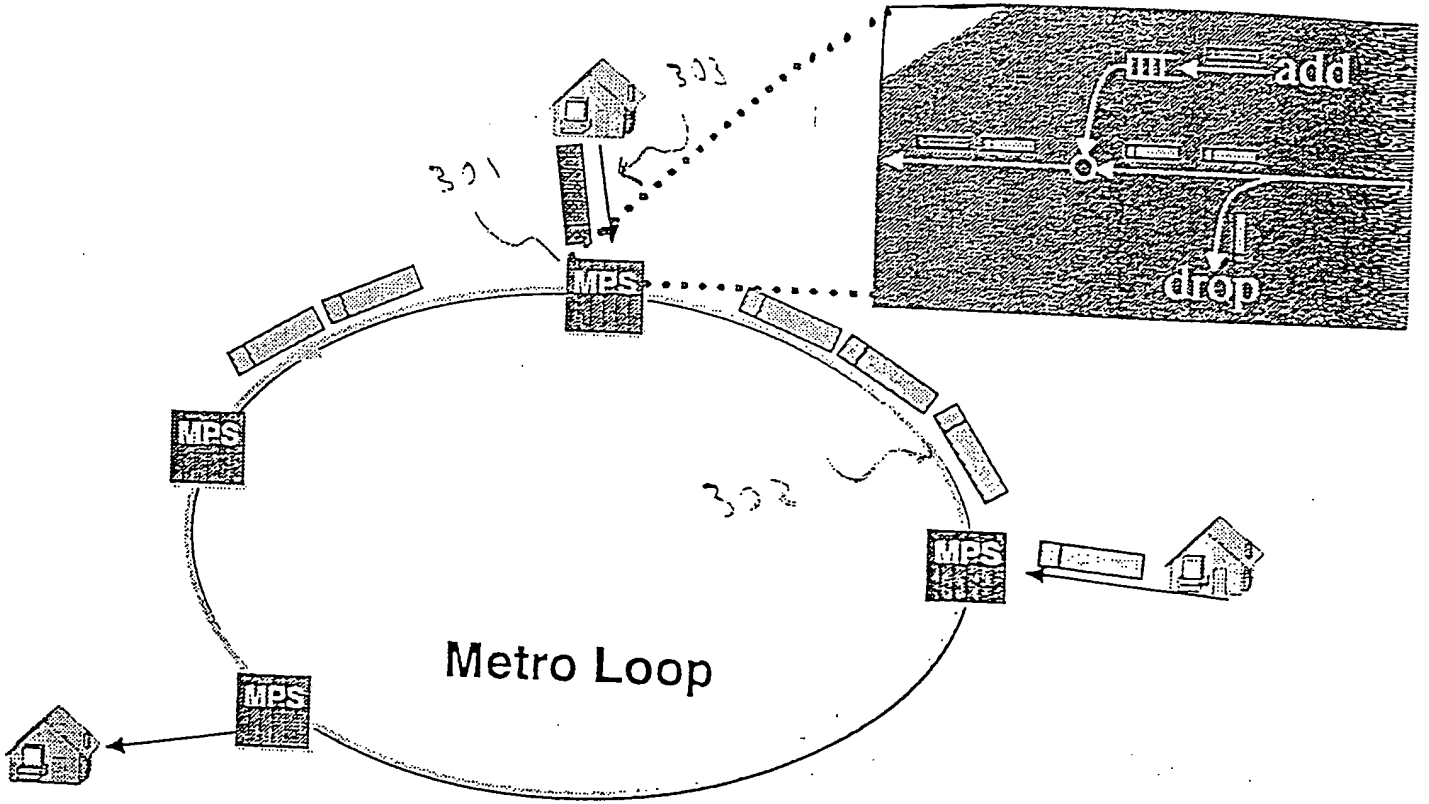


FIG. 3

22-141 50 SHEETS
22-142 100 SHEETS
22-144 200 SHEETS



009020 DBTT960

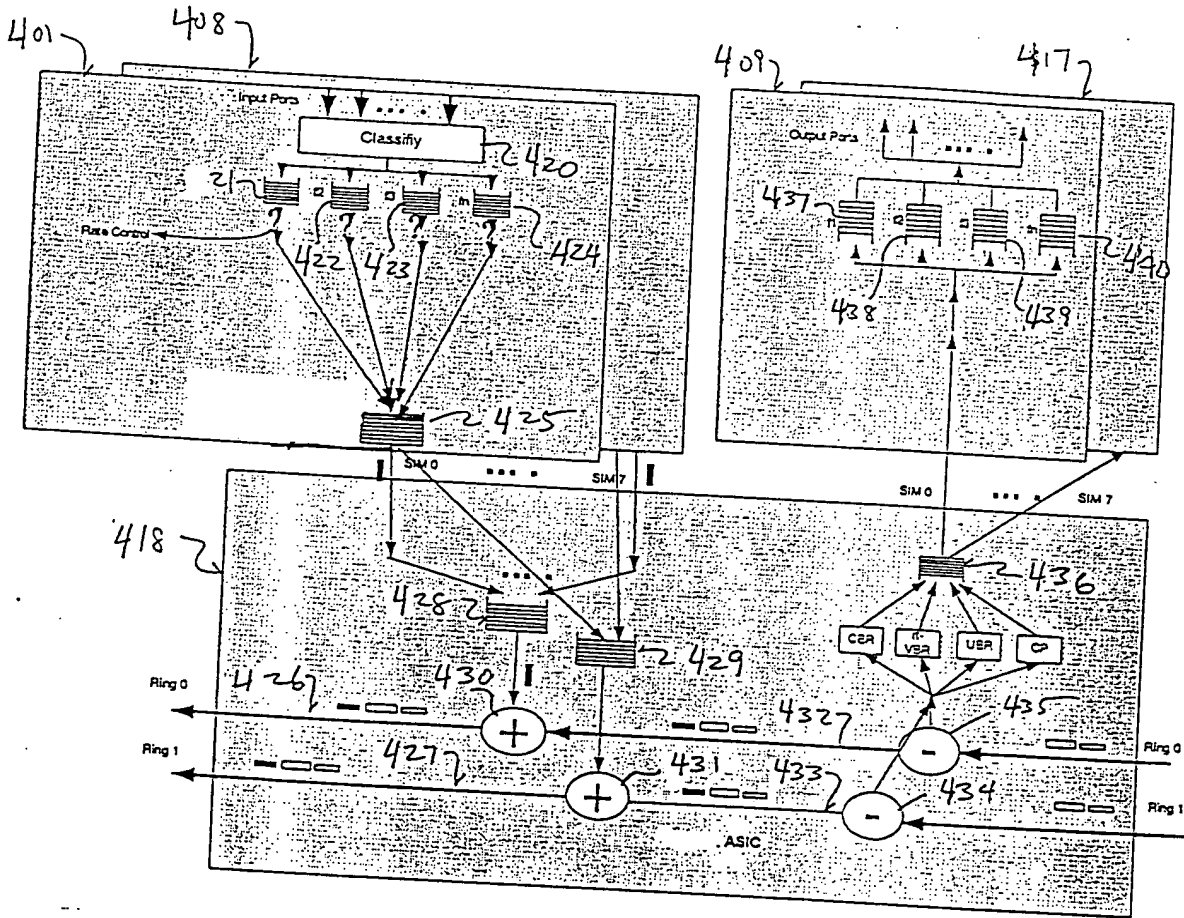


Figure 4

009020" 08TTF960

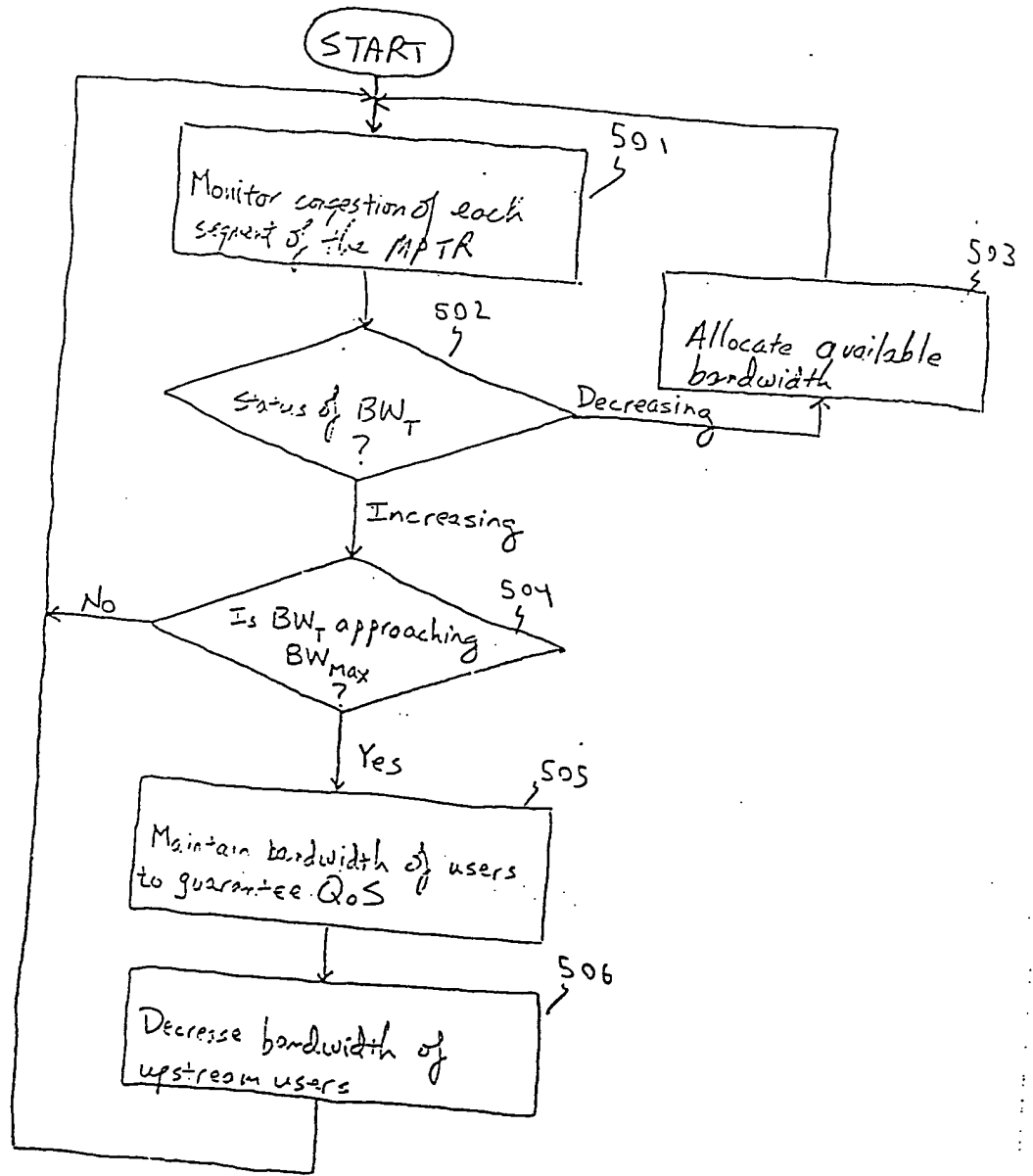


FIG. 5

009020 08TTF60

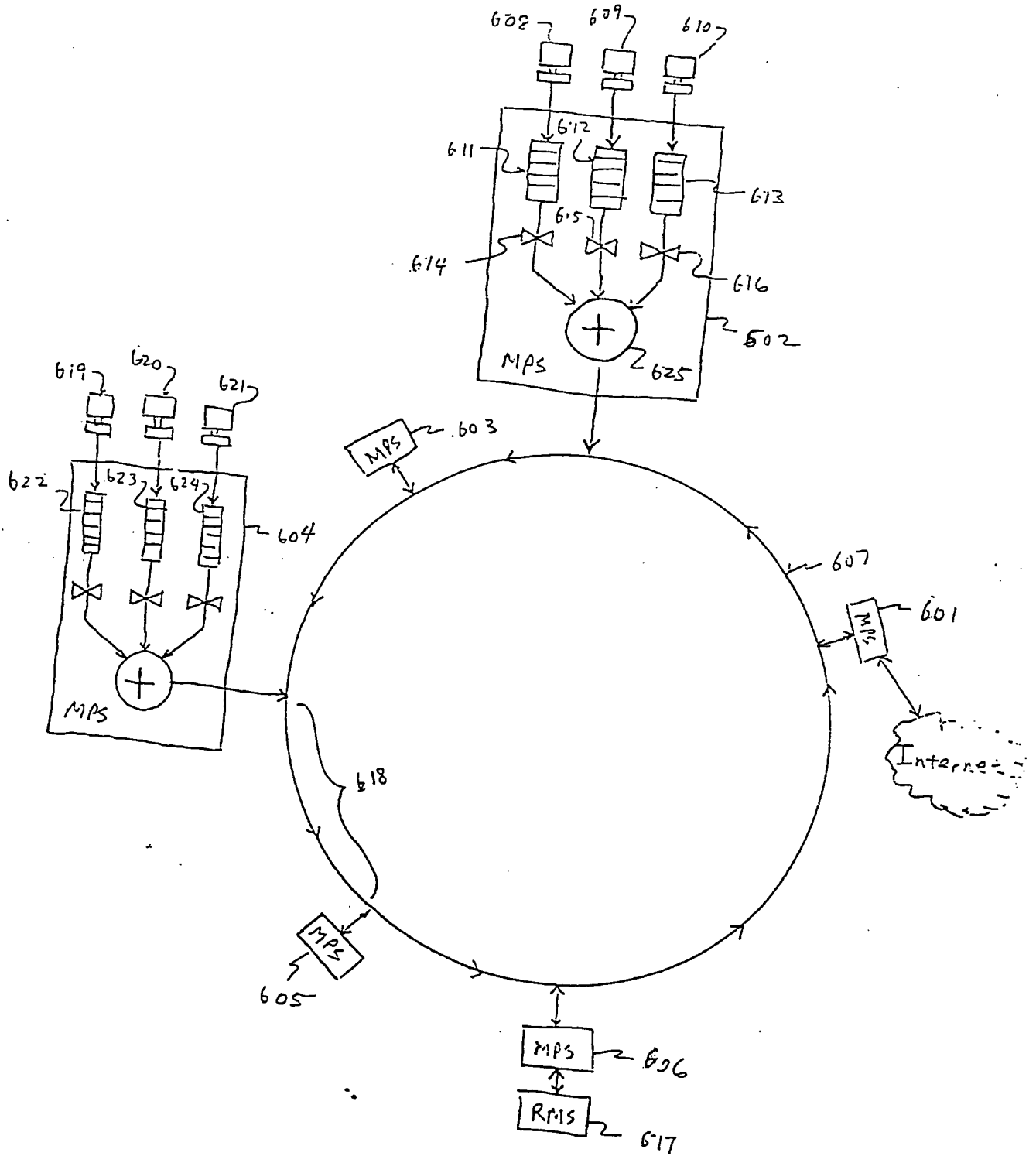


FIG. 6

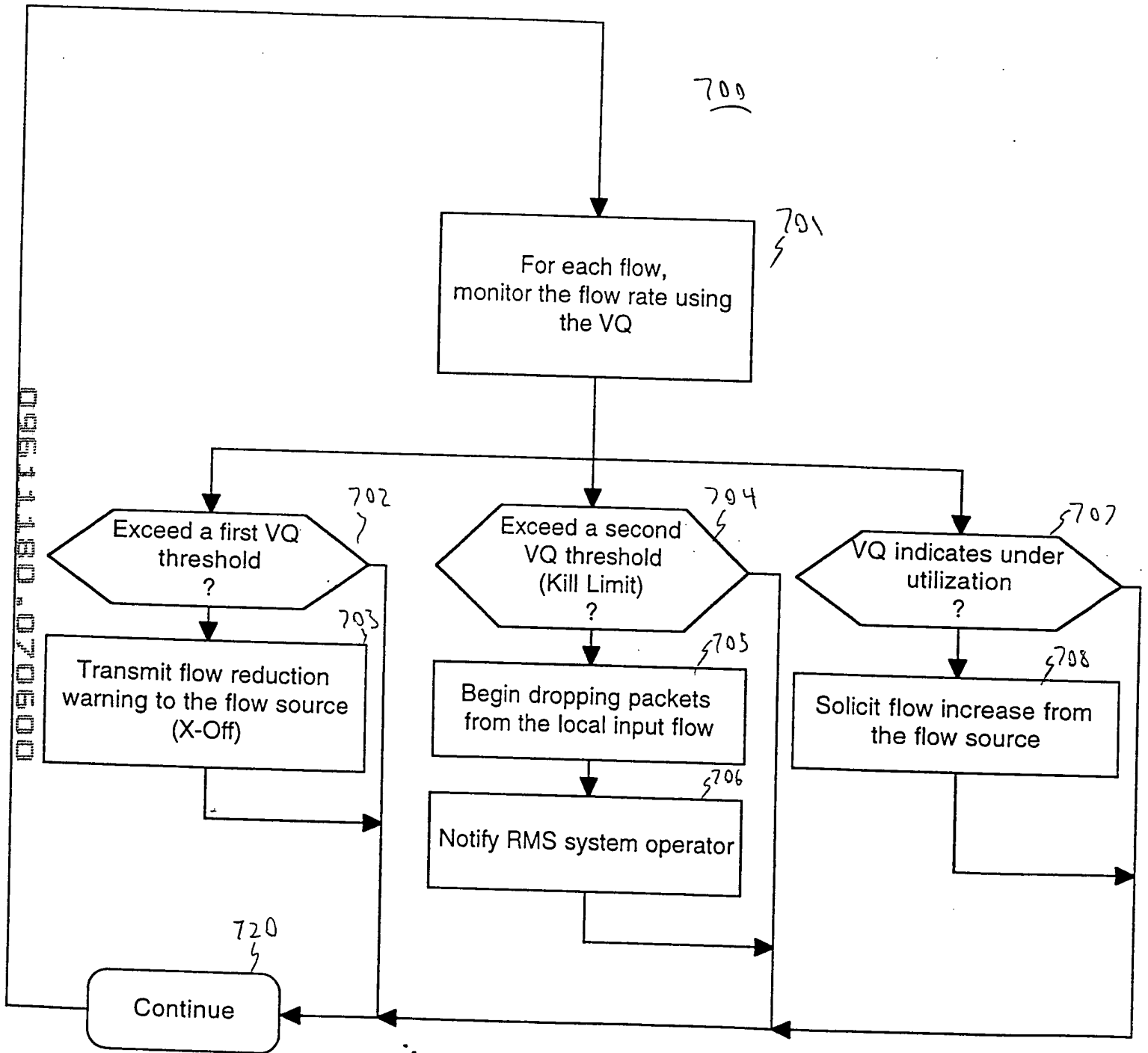


FIG. 7

800

Flow ID	Valid	X-Off	Action	P_Ring	C_Ring	Dist	SIM	Priority	MU	Protection	BE Weight	Reserved rate	R Finish time	S Finish time	P_Off	S_Off	Reserved	Note	
0 bit	1 bit	1 bit	1 bit	1 bit	1 bit	2 bits	9 bits	1 bit	1 bit	1 bit	6 bits	14 bits	32 bits	32 bits	1 bit	1 bit	4 bits	8.4 sec @ 5ns clk	
1	1	No	Kill	R1		Transit	000000000	0	Guarantee		0	10 Mbps	435ABC	435ABC				Backlogged flow	
2	1	Yes	Pass	R2		receive	100000000	0	BE(STD)		1	80 Mbps	NULL	NULL				Non-Backlogged flow	
3	1		Pass	R2		Transit	000000000	0			0	NULL	NULL	NULL				Unused entry	
4	1		Pass	R1		Insert	000000001	0			63	1 Gbps	3535DF	3535DF				Backlogged flow	
5	1		Pass	R1		copy	100000000	1	Guarantee		0	100 Mbps						Pickup for Multicast	
.
.	0
9999	1					Insert					0	8.5 Gbps	NULL	NULL				Non-Backlogged flow	

Fig. 8

009020-08TF960

**This Page is Inserted by IFW Indexing and Scanning
Operations and is not part of the Official Record**

BEST AVAILABLE IMAGES

Defective images within this document are accurate representations of the original documents submitted by the applicant.

Defects in the images include but are not limited to the items checked:

- BLACK BORDERS
- IMAGE CUT OFF AT TOP, BOTTOM OR SIDES
- FADED TEXT OR DRAWING
- BLURRED OR ILLEGIBLE TEXT OR DRAWING
- SKEWED/SLANTED IMAGES
- COLOR OR BLACK AND WHITE PHOTOGRAPHS
- GRAY SCALE DOCUMENTS
- LINES OR MARKS ON ORIGINAL DOCUMENT
- REFERENCE(S) OR EXHIBIT(S) SUBMITTED ARE POOR QUALITY
- OTHER: _____

IMAGES ARE BEST AVAILABLE COPY.

As rescanning these documents will not correct the image problems checked, please do not report these problems to the IFW Image Problem Mailbox.